



**FREIGHT
COUNTER**

Logistics beyond expectation

**India's Youngest & Largest B2B
Logistics Services Provider**

**LOGISTICS | TRANSPORTATION | FREIGHT FORWARDING
& SCM BUSINESS | NETWORK | REVENUE &
PROFITABILITY**

**BUILDING INDIA'S LEADING
B2B LOGISTICS MARKET PLACE**



**LOGISTICS THROUGH
INNOVATION • DEDICATION • TECHNOLOGY**

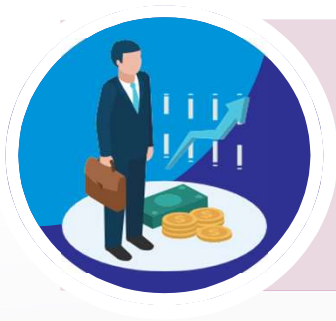
(An ISO 9001:2015 & ISO/ IEC 27001:2013 Certified Company)



**FREIGHT
COUNTER**
Logistics beyond expectation

India's Youngest & Largest B2B Logistics Services Provider

Boost Your Transportation Fast & Easy with Freight Counter



Increase your Additional Revenue, Income & Profitability for Logistics, Transportation, Freight Forwarding & Import Export Business. Now you can increase your Logistics Business & Revenue Up to 35%.

Grow your Business & Develop your Network in The Market among The India's more than 4000 Top Companies & Multi National Companies We provide Unlimited Business Enquiries / RFQ on Daily Basis.



One Stop Logistics Business Point for Logistics Service Providers, Transporters, Freight Forwarders & Import - Export Service Providers. Freight Counter offers B2B Market Place with Real Time Freight Sourcing, RFQs & Enquiries on Regular Basis. Now Get or Book your Return Load / Inward Load for your Vehicles from Anywhere.

Freight Counter Offers Unlimited Business Enquiries or RFQs on Daily Basis. The Logistics Partner can Bid & Give Freight Rates for Bulk Enquiries as well as Annual Vehicle Requirement.



Your Trusted
Logistics Partner



www.freightcounter.com



**FREIGHT
COUNTER**
Logistics beyond expectation



Our Logistics Partners / Members are not Require to Pay any EMD or Security Deposit to The Shippers / Customers. Our all Subscribed Logistics Partners or Members are Exempted from EMD / Security Deposit.

Now More Occupied your All Types of Logistics Fleets/ Vehicles as well as your attached vehicles including O.D.C. & Project Cargoes. Business for Full Truck Load as well as Part Truck Load Across India.



Save your Time & Effort, Get more Focus on New Business Your Logistics / Business Development Team can more Focus on Real Time Enquiries / RFQs. Now Easy to Get The Business from All our Registered Shippers.

Our Process of Floating RFQ/ Enquiries & Vehicle Placements are Fully Automated, Online, Technology Driven, Dynamic, Transparent & 100% Secure Access. Supporting End To End Logistics Solution Starting from RFQ to Goods Delivery & Document Process.



Increase Logistics Business
Increase Logistics Business

Keeping
Logistics Business
Grow, Always

Call us Now : +91 8380075048

Benefit for Transportation Partner

1. INCREASE YOUR LOGISTICS BUSINESS AND REVENUE UP TO 35% EVERY YEAR:

Freight Counter is India's First and Largest B2B Online and Offline Subscription-based Logistics Services Provider to increase your logistics/transport business, revenue, and profitability for your logistics, transportation, freight forwarding, import/export, and supply chain management solutions. Increasing your business was never easier than this. Now you can increase your logistics business and revenue up to 35%.

2. UNLIMITED BUSINESS ENQUIRIES AND RFQs ON A DAILY BASIS:

Our subscribed logistics business partners or members will get access to unlimited and multiple business enquiries and RFQs on a daily and regular basis from more than 5000+ registered top companies and multinational companies in India. All these logistics services enquiries or RFQs are floating on a real-time basis, and our members can bid and give their best rate for annual/logistics requirements.

3. GOLDEN OPPORTUNITY TO DEVELOP NEW BUSINESS AND NETWORK IN THE MARKET:

As we know, third-party logistics service providers/transporters are always wondering why they cannot increase their business fast enough with their current customers and add new ones, also to increase their network. Here is the solution to convey to shippers that their prices are competitive and they can offer better services in the existing set of transporters.

Now, Freight Counter has a great solution and gives you the golden opportunity to increase and develop new business and network faster than ever possible and take your logistics business to the next level.

4. UNLIMITED USERS ACCESS FOR YOUR MULTIPLE BRANCHES OR REGIONAL OFFICES:

Now you can get access for all your branches or regional offices anywhere in India with unlimited logins to improve your business performance for your all units. Unlimited users' access ensures benefits for your organizational goals where your team can get more focus on new enquiries or RFQs as core sales and business activity with tracking of enquiries, e-auction, and placement of vehicles. So, your team will be more efficient in handling new clients and operations across India.

5. ONE STOP LOGISTICS BUSINESS POINT FOR LOGISTICS COMPANY/TRANSPORTER/FREIGHT FORWARDER AND IMPORT-EXPORT SERVICE PROVIDERS:

Freight Counter is a B2B logistics marketplace with real-time freight sourcing and providing one-stop logistics business solutions where you will get daily enquiries/RFQs at PAN India locations on your dashboard and participate for a bid and get the business volume regularly.

6. NOT REQUIRED TO PAY ANY EMD OR SECURITY DEPOSIT OR BANK GUARANTEE TO THE SHIPPERS/CUSTOMERS:

Our all-verified logistics business partners or members are free to pay EMD (Earnest Money Deposit) or any other security deposit for getting business from our registered shippers/clients.

Our portal gives you the freedom from the traditional process of paying any EMD or security deposit. You need to just pay the nominal annual subscription and get unlimited business opportunities regularly.



Benefit for Transportation Partner

7. GUARANTEED LOGISTICS BUSINESS ENQUIRIES & RFQs ON A REGULAR BASIS:

Freight Counter is India's First and Largest B2B Logistics Solutions and Business Provider. We give you the Business Guarantee for your Logistics, Transportation, Freight Forwarding, and Import-Export Business with regular Enquiries and RFQs to increase your revenue. We are generating more than 3100 Business Enquiries on a monthly basis for our esteemed and registered customers or members.

8. MORE OCCUPIED FOR YOUR ALL TYPES OF LOGISTIC FLEETS/VEHICLES:

Freight Counter offers logistics businesses to all its subscribed members or registered members on a regular basis. Including Return/Inward Freight, this means your vehicles or fleets will be more occupied and earn good business due to the consistency and regularity of vehicle movements. We provide logistics business to all types of fleets/vehicles like trucks/taurus/containers/trailers/ODCs, and project cargoes.

9. EASY TO GET OR BOOK RETURN LOAD/INWARD LOAD FROM ANYWHERE (PAN INDIA LOCATION):

Today, the big challenge for any logistics companies or transporters is to get the load in return or inward from the drop point. Now Freight Counter has solved the issue for return or inward vehicle placement/movement where you can also float your inward/return vehicles' placement on the dashboard, where we will provide you the nearest load position from our registered shippers or customers.

10. MORE FOCUS ON PROFITABILITY WITH REAL-TIME RFQs AND LOGISTICS ENQUIRIES:

Freight Counter provides real-time RFQs and enquiries in bulk, allowing you to focus more on your core areas or profitable locations as per vehicle type.

11. COMPLETE ONLINE AND TRANSPARENT BUSINESS PROCESS:

Our process of floating RFQs/enquiries, bidding, and placement of vehicles are fully automated, online, technology-driven, dynamic, transparent, and 100% secure. It supports end-to-end logistics solutions starting from RFQs to delivery and freight payment.

12. BUSINESS FOR ALL TYPES OF LOGISTICS VEHICLES WITH PART TRUCK LOAD AND FULL TRUCK LOAD:

Freight Counter specializes in logistics business and logistics solutions, focusing on our core areas to generate logistics business for you. We deal with and float RFQs on full truckload and part truckload bases only.

13. SINGLE SCREEN ACCESS TO QUOTE THE PRICES AND PLACEMENT OF VEHICLES AS PER YOUR SUITABLE LOCATIONS/VEHICLES:

Freight Counter provides completely customized and online real-time data based on your dashboard with single-screen access for all types of enquiries/RFQs, bulk enquiries, bid price, placement date, shipper's name, load type, material type, freight amount, etc., for better control and more concentration on ongoing and upcoming vehicles' requirements for our registered shippers and customers.